



Lunch-to-Go Bag

Technique:	Machine Sewing
Designed By:	Marie Duncan
Skill Level:	Intermediate
Crafting Time:	½ day
Finished size:	9" (23cm) x 8" (21cm) x 4" (11cm)

Featuring Dual Duty XP®, Coats® Bold Hand Quilting thread

Create this easy, Zakka style inspired bag for lunch on the go! The piecing is easy breezy with no corners to match up! Big stitch quilting highlights the patchwork.

Supplies

- Coats Dual Duty XP® sewing thread
- Coats® Bold Hand Quilting Thread

Fabric required

- ½ yard (.30m) Linen (**Fabric A**)
- ⅝ yard (.57m) Blue Print (**Fabric B**)
- ⅙ yard (.11m) Yellow Print (**Fabric C**)
- ⅙ yard (.11m) Red Print (**Fabric D**)
- ⅙ yard (.11m) Aqua Print (**Fabric E**)
- Cotton Batting ½ yard (.46m)
- Safety pins
- Decorative buttons, one 1" (2.54cm), one ¾" (1.90cm), one ½" (1.27cm)
- 4" (10.16cm) of ⅛" (.32cm) wide ribbon

Optional

- ¼" piecing foot
- Dual Feed/Walking foot

Cutting

From:

Fabric A:

3 strips 2½" x 23" (6.35cm x 58.42cm) for bag
 3 strips 2½" x 8" (6.35cm x 20.32cm) for flap
 1 strip 2½" x 12" (6.35cm x 30.48cm) for handle

Fabric B:

10 squares 2" x 2" (5.08cm x 5.08cm)
 Two strips 2¾" x 23" (6.35cm x 58.42cm) for bag
 1 rectangle 14" x 23" (35.56 x 58.42cm) for bag lining
 1 rectangle 8" x 9½" (20.32cm x 24.13cm) for flap lining
 1 strip 2½" x 12" (6.35cm x 30.48cm) for strap

Fabric C:

10 squares 2" x 2" (5.08cm x 5.08cm)

Fabric D:

10 squares 2" x 2" (5.08cm x 5.08cm)

Fabric E:

10 squares 2" x 2" (5.08cm x 5.08cm)

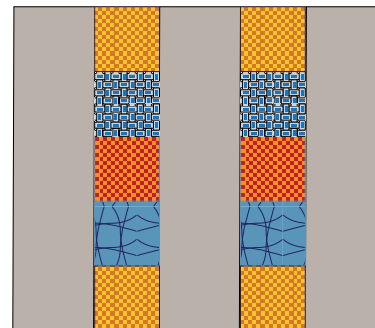
Batting:

15" x 24" for bag (30.10cm x 60.96cm)
 9 x 11 for flap (22.86 x 27.94cm)
 1 strip 2½" x 12" (6.35cm x 30.48cm) for strap

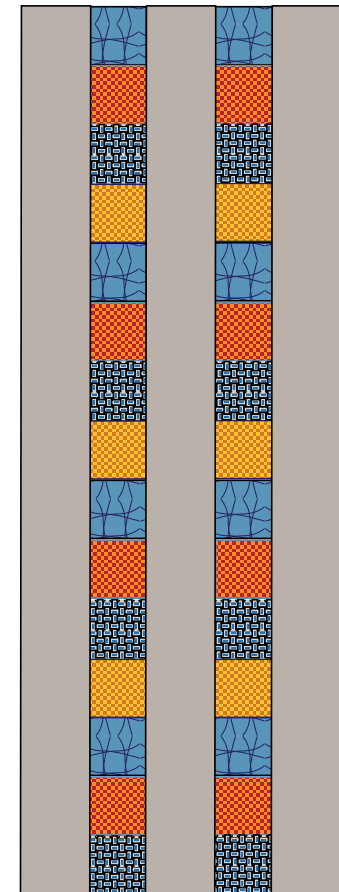
Note: All seams ¼" (.635cm) unless otherwise noted

Sewing

1. Stitch thirty of the 2" x 2" (5.08cm x 5.08cm) squares right sides together, into two strips each containing 15 squares. Alternate the different prints.
2. Stitch the remaining 10 squares into two strips each containing 5 squares. Alternate the different prints.
3. Press the seam allowances to one side.
4. Stitch the 15-square patchwork strips in between the 2½" x 23" (6.35cm x 58.42cm) fabric A strips.
5. Stitch the 5-square patchwork strips in between the 2½" x 8" (6.35cm x 20.32cm) fabric A strips.

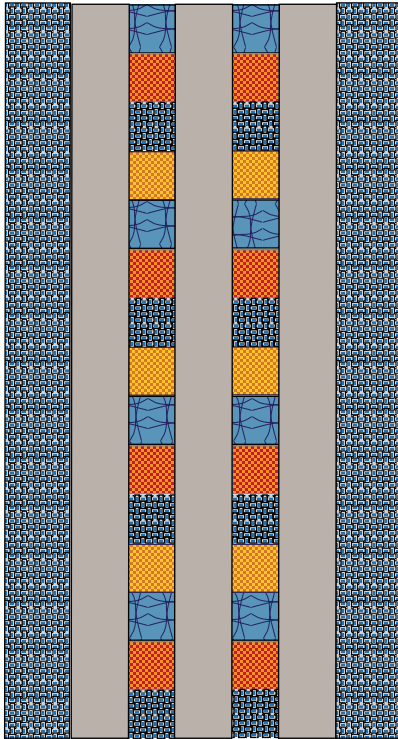


Five strip patchwork flap



Fifteen strip patchwork bag

6. Press the seam allowances towards the fabric A strips.
7. Stitch the two strips $2\frac{3}{4}$ " x 23" (6.35cm x 58.42cm) **Fabric B** strips on each side of the 23" (58.42cm) long pieced bag fabric.

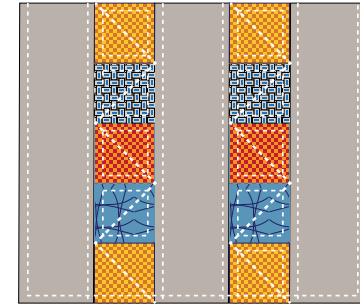


Fifteen strip patchwork bag

8. Press the seam allowances towards the center.

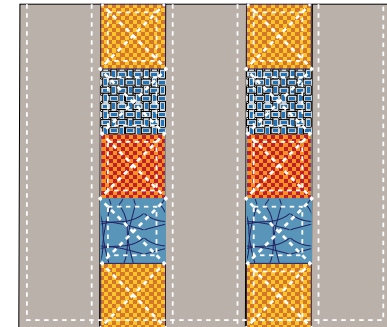
9. Place both of the patchwork pieces on batting.
10. Safety pin baste the patchwork to the batting.
11. Thread a hand needle with Coats Bold Hand Quilting Thread.
12. Hand quilt around each square and along the edges of the long strips on each side of the squares.
13. Trim away the excess batting.
14. Place both of the quilted patchwork on the lining pieces. Trim away any excess. (When you quilt the fabric, it sometimes "shrinks".) Separate the patchwork and lining.
15. Fold the quilted bag patchwork right sides together forming the bag. Stitch the side seams using a $\frac{1}{2}$ " (1.27cm) seam allowance.
16. Match the bottom fold to the side seam.
17. Measure and mark a line $3\frac{1}{2}$ " (8.89cm) in from each point to box the corners.
18. Stitch on the marked line.
19. Place the patchwork flap and the flap lining right sides together.
20. Fold the ribbon in half and pin the ends even with the raw edge, in the center of one long edge.
21. Stitch the two short sides and the long side with the pinned ribbon.
22. Clip the corners, turn and press.
23. Hand quilt $\frac{1}{4}$ " (.635cm) from the edge of the long strips.

24. Quilt from corner to corner as shown, on the strip of squares.



Five strip patchwork flap

25. Begin at the opposite corner and repeat as shown.



Five strip patchwork flap

26. Place the finished flap right sides together with the bag, matching the center of the flap with the center of the bag.
27. Stitch near the edge to hold in place.
28. Fold the 14" x 23" (35.56 x 58.42cm) bag lining right sides together and stitch the side seams leaving a 4" (10.16cm) opening for turning.
29. Box the corners as you did for the outer bag.
30. Place the outer bag and the bag lining right sides together and stitch all the way around the top.
31. Turn through the opening in the side seam.
32. Press the top edge.
33. Hand quilt or machine topstitch ¼" (.635cm) from the edge.
34. Hand or machine sew the opening in the lining closed.
35. Press the corners of the bag.
36. Machine tack the sides, to fold in.
37. Stack the three buttons with the largest on the bottom.
38. Fold down the flap and mark the button placement.
39. Stitch the buttons in place.
40. Place the two 2½" x 12" (6.35cm x 30.48cm) handle strips right sides together on top of the batting.
41. Stitch all the way around leaving a 3" opening on one long edge for turning.
42. Clip the corners, turn and hand quit or machine top stitch ¼" (.635cm) from the edge.

43. Place the handle on the lunch bag and pin in place as shown.



44. Stitch a square, holding the handle in place.